

Your Visit System

Flash Receiver - Description

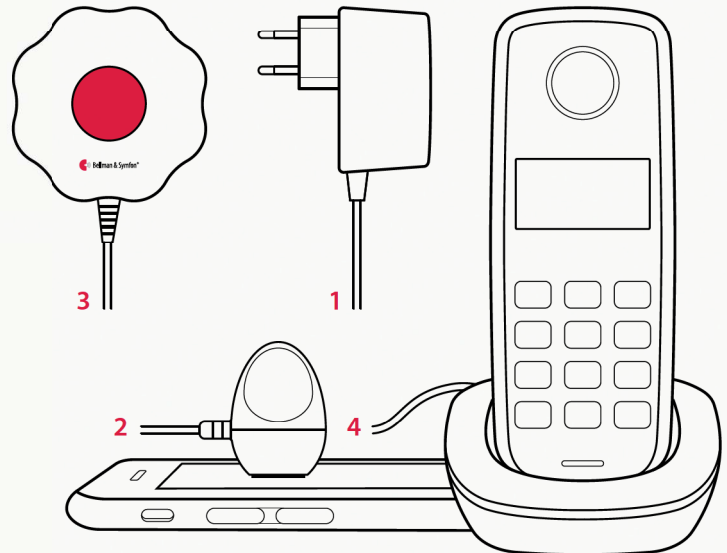
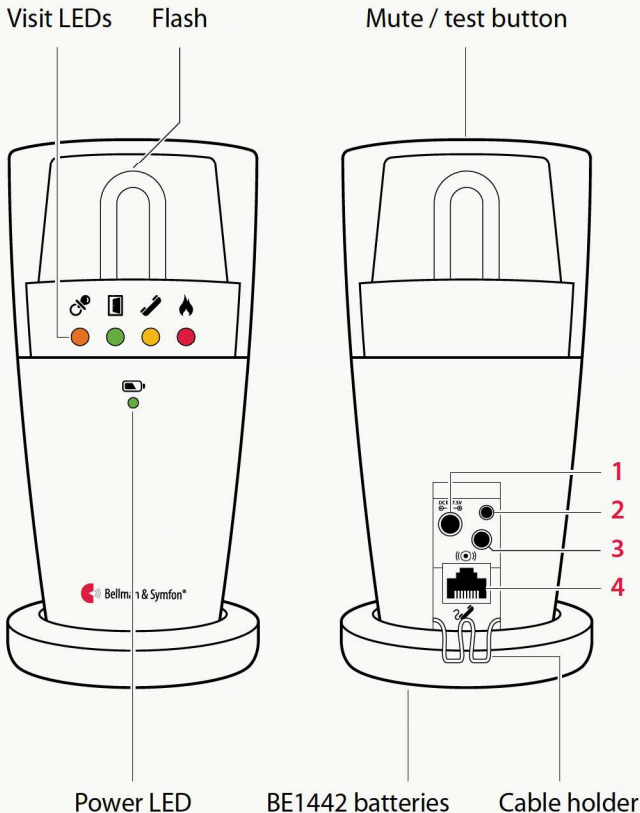
The Flash receiver is part of the Visit smart home system that helps you to keep tabs on your home. It alerts you with bright flashes when the doorbell or telephone rings, when your baby needs you or if a fire should occur. It's easy to use, wireless and features colored lights for easy signal identification.

FEATURES

Bright flashes	30 Candela Xenon light
Clear signal identification	Uses colored LED lights
Rotating top	Easy to direct the flashlight
Multiple connections	Outlet for telephone and bed shaker
Battery backup	Works even during power loss



Buttons and controls



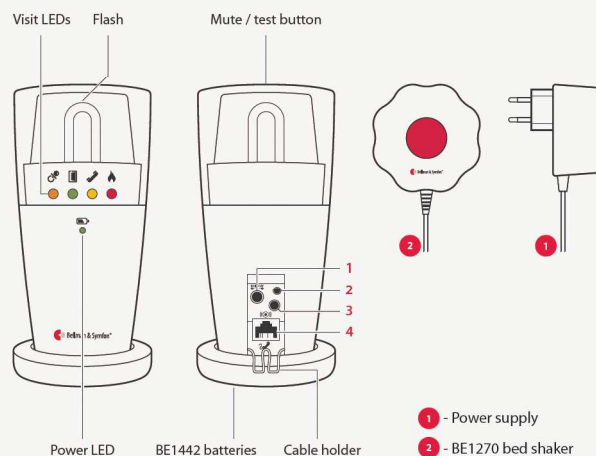
1 - Power supply, 2 - BE9251 mobile phone sensor
3 - BE1270 bed shaker, 4 - BE9105 telephone cable

Your Visit System

Flash Receiver - Handy Hints

When supplied, all Bellman Visit devices are set to communicate on one default radio channel. Other close-by equipment working on the same frequency may interfere with your system. To overcome this interference, we can change the 'Radio Key' or "channel" on one set of equipment.

1. The transmitters (Smoke Alarm, Door Bell, Baby Cry, Telephone Transmitter etc.) have switches to set the radio key and the receivers such as the Flash are 'paired' with the transmitters.



2. Problems arise when the Flash is unintentionally put into programming mode and something else (could be a toy, a drone, garage door opener etc.) transmits. The Flash pairs to that transmission and no longer communicates with the Bellman equipment. (Except for Smoke Alarms which, for safety reasons, broadcast across the entire 433MHz band.)

3. Very often when the Flash is inadvertently put into programming mode and no pairing signal is received, it becomes completely unpaired and the door icon alarms every three or four minutes.

The Test facility (top of the flasher) is used for pairing of the Flash receiver with the transmitters as required.

- Press and hold the Test button (approx. 5 seconds) until the two center alarm icon lights start flashing. Release the test button.
- Press and hold the Doorbell Transmitter button (or Bridge test button) until all four alarm icon lights flash sequentially.
- The four icon lights will stop flashing soon after. The Pairing Procedure is now complete.
- Proceed to test all smoke alarms and any other transmitters such as doorbells, Baby Cry or Telephone Transmitters signals are being correctly received by the Flash Receiver.

Units can become mis-paired if users press and hold the test button, possibly by opening a heavy book and leaning the cover on it or by merely playing with it. If this pairing procedure is held for an extended time, it become completely unpaired and is quite miserable. It signals this condition by sounding an alarm every few minutes.

To fix, carry out the above pairing procedure, using any transmitter except a smoke alarm.

Note; smoke detectors broadcast on all channels (this is a safety feature) so need not be paired. They should, nevertheless be tested with the clock. Test by pressing the smoke alarm test button

Please ensure your Flash unit is firmly plugged into the mains power supply at all times.